



# AOS ELITE CABINETS

8 AOS CABINETS

Elias Woodwork provides a full custom solution to all of your kitchen and bath remodeling needs with our Assemble On Site (AOS) line of Cabinet boxes. Our European style frameless cabinet boxes are available in standard white furniture board or UV finished birch plywood with two assembly options. Our face frame cabinet boxes are available in various species of plywood featuring the Cabinotch® Custom Cabinet Box System. Both lines are fully customizable and manufactured in North America.

Our cabinet boxes are designed to accommodate any new remodel or refacing project for the kitchen and bath industry. Available in any width, height or depth, they allow you to create a custom kitchen without the added expenses of creating your own cabinet boxes or shipping fully assembled ones. This in turn provides an economical edge for more competitive pricing.

### Frameless AOS Cabinet Box Features:

- Available in white furniture board or UV finished birch plywood.
- Edgebanded white or with various matching wood grains.
- Using Carb 2 Compliant materials only.
- Manufactured in North America.
- Lock Dowel Assembly:
  - Easy and fast assembly using only a rubber mallet and glue. No screws required.
  - Available in 3/4" (19mm) thick sides, backs, bottoms, tops and shelves.
- Screw & Dowel Assembly:
  - Easy fast assembly using supplied dowels and screws.
  - Available in 5/8" (16mm) thick sides, backs, bottoms and tops. Shelves are 3/4" (19mm) thick.



Lock Dowel Hardware



Lock Dowel Assembly

### Face Frame AOS Cabinet Box Features:

- Fast assembly using a patented wood on wood locking joint for solid, high quality construction. Assembly requires no clamps. Glue and minimal pin nailing is required. A standard 24" base cabinet can be assembled in 5 minutes.
- 1/2" (12mm) thick sides, backs, bottoms and tops with 3/4" shelves.
- Durable Ultraviolet (UV) resistant finished interiors.
- Fully finished face frames, toe kicks and end panels to match your selected door style.
- Available in plywood; Cherry, Hickory, Hard Maple, Poplar, Alder, Red Oak, Walnut, White Oak and Paint Grade Soft Maple. Lead time will vary with species choice.

### Additional Information:

**Finishing** - Cabinet boxes are prefinished with a smooth, durable scratch resistant UV coating on the inside. We can finish the face frames, toe kick or gable ends to match corresponding doors. Choose from hundreds of door styles and finishes for unlimited style freedom.

**Hardware** - Unless otherwise specified, your cabinet boxes are quoted and supplied with door hinges and drawer slides.

**Warranty** - All components including cabinet boxes, cabinet doors and accessories are warranted for 1 year from the date of purchase against manufacturing defects in materials or workmanship.

**Shipping** - Freight costs vary with the weight and volume of the product and distance shipped. However, because we are shipping your cabinets packed flat, it will cost much less than shipping fully assembled cabinetry. Your hardware and other components are shipping together with your cabinet boxes. Everything is labeled to ensure ease of assembly. Orders are shipped by LTL Freight or courier.

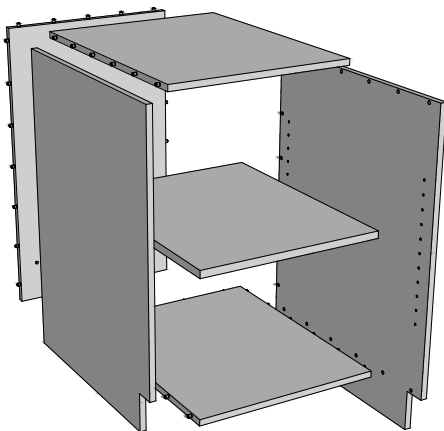
**Face Frame Overlay** - We offer 1/2", 1 1/4" and flush inset overlay options. Please note that hinges are not supplied for flush inset cabinet boxes.

**NOTE:** Appliances and decorative hardware are not included and are shown for illustrative purposes only.

# Frameless Cabinet Boxes

## Specifications

- Customizable width height, and depth to 1/16" (1.5mm).
- Maple or Birch dovetail drawer boxes available.
- Lock Dowel assembly option:
  - Assembled using locking dowels and wood dowels already installed in the parts. Gluing is recommended on the wood dowels. Parts then snap together for fast, easy assembly.
  - Sides, top, bottom, back, top and shelves are 3/4" (19mm) thick.
- Screw & Dowel assembly option:
  - Assembled using supplied dowels and screws. Dowels are already installed in the parts and only require glue and screws for easy assembly.
  - Sides, top, bottom, back are 5/8" (16mm) thick. Shelves are 3/4" (19mm).
- Available in white furniture board or Birch plywood.
- DRAGON PLY Pre-Finished Birch Plywood:
  - UV finished for a smooth, durable, scratch resistant finish.
  - Environmentally friendly Carb 2 Compliant.
  - Multi-ply core construction combined with proper core drying to provide best in class performance.
  - Core is calibrated before application of face veneer to ensure HPVA or better thickness tolerance.
  - Veneers are manufactured and graded on-site ensuring HPVA and better grades.
- UNIBOARD PANVAL 555 Nova White Melamine
  - Particle Core with closest matching solid or wood grain PVC edgebanding available.
  - Cabinets with shelves have the side panels bored for 5mm shelf pins on 1.26" (32mm) centers.
  - Toe kick is 4 1/2" (114.3mm) high.



## Hardware

### Door Hinges & Shelf Pins:

- 110 degree full overlay soft close CLIP TOP hinges.
- Shelf pin has clear acrylic support end with metal pin.

### Dovetail Drawer Box Runner Systems:

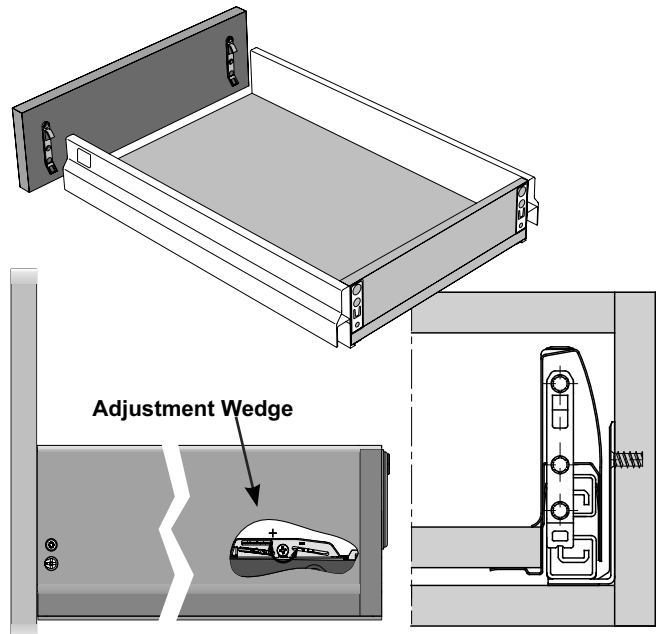
- Tandem plus Blumotion concealed drawer runners offer two-dimensional front adjustment and exceptional load capacity.
- Blumotion technology ensures silent and effortless closing action.
- Load Capacities: 66 lb (30 kg) load capacity.

### Adjustment:

- Tool-free height adjustment on all locking devices.

### NOVA PRO DELUXE Drawer System (optional)

- Fully synchronize slide technology without mid-way knock.
- Excellent running characteristics.
- Maximum stability.
- Minimal drawer deflection.
- Integrated height and side adjustment.
- Drawer front can be fitted and removed without tools.
- Optimal use of storage space due to straight inside surfaces and narrow construction width.



# Frameless Base Cabinets

**BFH(L/R)**

Base Cabinet with 1 Door  
Option: 2 Adjustable Shelves



**BFH**

Base Cabinet with 2 Doors  
Option: 2 Adjustable Shelves



**B(L/R)**

Base Cabinet with 1 Door, 1 Drawer  
Option: 1 Adjustable Shelf



**B**

Base Cabinet with 2 Doors, 1 Drawer  
Option: 1 Adjustable Shelf



**B2D**

Base Cabinet with 2 Doors, 2 Drawers  
Option: 1 Adjustable Shelf



**BD2L**

Base Cabinet with 2 Large Drawers



**BTRD**

Base Cabinet with 1 Top Drawer,  
1 Large Recycle/Trash Drawer



**B3D**

Base Cabinet with 3 Drawers



**B4D**

Base Cabinet with 4 Drawers



# AOS Elite CABINETS

## Base Cabinets - Frameless Cabinet Boxes

### SB(L/R)

Kitchen Sink Base Cabinet with  
1 Door, 1 False Front



### SB

Kitchen Sink Base Cabinet with  
2 Doors, 1 False Front



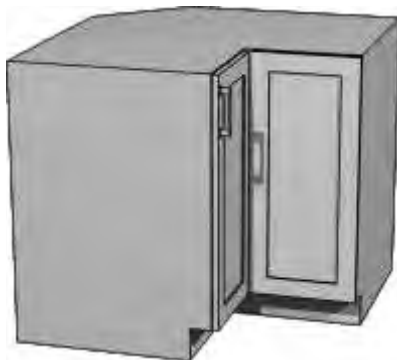
### SB3D

Kitchen Sink Base Cabinet with  
3 Drawers, 1 False Front



### BCC(L/R)

Base Corner Cabinet with 1 Bifold Door  
Option: 2 Adjustable Shelves



**Note:** Shelf must be installed  
BEFORE the cabinet top.

### BAC(L/R)

45° Base Angled Corner Cabinet  
with 1 Door, 1 Drawer  
Option: 1 Adjustable Shelf



**Note:** Shelf must be installed  
BEFORE the cabinet top.

### BACFH(L/R)

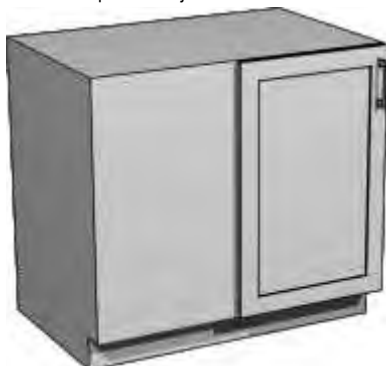
45° Base Angled Corner Cabinet  
with 1 Full Height Door  
Option: 2 Adjustable Shelves



**Note:** Shelf must be installed  
BEFORE the cabinet top.

### BBCLFH

Base Cabinet with Blind Corner on Left Side,  
1 Full Height Door  
Option: 2 Adjustable Shelves



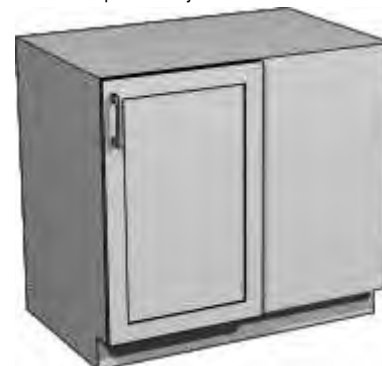
### BBCL

Base Cabinet with Blind Corner on Left Side,  
1 Door, 1 Drawer  
Option: 1 Adjustable Shelf



### BBCRFH

Base Cabinet with Blind Corner on Right Side,  
1 Full Height Door  
Option: 2 Adjustable Shelves



# AOS Elite CABINETS

## Frameless Cabinet Boxes - Base Cabinets

**BBCR**  
Base Cabinet with Blind Corner on Right Side,  
1 Door, 1 Drawer  
Option: 1 Adjustable Shelf



**BMW**  
Base Microwave Cabinet with  
1 Lower Drawer  
Note: Appliance specs required.



**BKDD**  
Base Knee Desk Drawer



**BCT**  
Base Cooktop Cabinet with  
1 False Front, 2 Doors  
Option: 1 Adjustable Shelf



**BCT2D**  
Base Cooktop Cabinet with  
1 False Front, 2 Drawers



**BCT3D**  
Base Cooktop Cabinet with  
1 False Front, 3 Drawers



**BOV**  
Base Oven Cabinet  
Note: Appliance specs required.



**BAR**  
45° Base Angled End Right  
Cabinet with 1 Door  
Option: 2 Adjustable Shelves



**BAL**  
45° Base Angled End Left  
Cabinet with 1 Door  
Option: 2 Adjustable Shelves



**VB(L/R)**  
Vanity Base Cabinet with  
1 Door, 1 Drawer  
Option: 1 Adjustable Shelf



# AOS Elite CABINETS

## Base Cabinets - Frameless Cabinet Boxes

**VB3D**  
Vanity Base Cabinet with  
3 Drawers



**VDSB3D**  
Vanity Double Sink Base Cabinet with  
3 Center Drawers  
Note: Comes as 3 units.



**VSBI(L/R)**  
Vanity Sink Base Cabinet Inverted  
with 1 Door, 1 Bottom Drawer



**VSBI**  
Vanity Sink Base Cabinet Inverted  
with 2 Doors, 1 Bottom Drawer



**VSBC2DL**  
Vanity Center Sink Base Cabinet with  
2 Drawers on Left, 1 Door on Right



**VSBC6D**  
Vanity Center Sink Base Cabinet with  
6 Drawers, 2 Center Doors, 1 Center False Front  
Note: Comes as 3 units.



**VSBC2DR**  
Vanity Center Sink Base Cabinet with  
2 Drawers on Right, 1 Door on Left



**VSB3DR**  
Vanity Sink Base Offset Left Cabinet  
with 3 Drawers on Right, 2 Doors on Left  
Note: Comes as 2 units.



**VSB3DL**  
Vanity Sink Base Offset Right Cabinet  
with 3 Drawers on Left, 2 Doors on Right  
Note: Comes as 2 units.



# Frameless Upper Cabinets

**W(L/R)**

Wall Cabinet with 1 Door  
Option: 2 Adjustable Shelves



**W**

Wall Cabinet with 2 Doors  
Option: 2 Adjustable Shelves



**WOB**

Wall Cabinet with 2 Doors, Open Bottom - No Floor  
Option: 2 Adjustable Shelves



**WAC**

45° Angled Corner Wall Cabinet  
with 1 Door  
Option: 2 Adjustable Shelves



**WBCL**

Wall Cabinet with Blind Corner  
on Left Side, 1 Door  
Option: 2 Adjustable Shelves



**WBCR**

Wall Cabinet with Blind Corner  
on Right Side, 1 Door  
Option: 2 Adjustable Shelves



**WAER**

45° Angled End Right Wall  
Cabinet with 1 Door,  
2 Fixed Shelves



**WAL**

45° Angled End Left Wall  
Cabinet with 1 Door,  
2 Fixed Shelves



**WCC**

Pie Cut Corner Cabinet with  
1 Bifold Door  
Option: 2 Adjustable Shelves



**WMW12**

Wall Microwave Cabinet  
12" Deep with 2 Doors  
Option: 1 Adjustable Shelf



**WMW16**

Wall Microwave Cabinet  
16" Deep with 2 Doors  
Option: 1 Adjustable Shelf





# Frameless Tall Cabinets

**TOV-1D**

Tall Oven Cabinet with 2 Doors, 1 Drawer  
Option: 3 Adjustable Shelves  
Note: Appliance specs required.



**TOV-2D**

Tall Oven Cabinet with 2 Doors, 2 Drawers  
Option: 2 Adjustable Shelves  
Note: Appliance specs required.



**TOV-3D**

Tall Oven Cabinet with 2 Doors, 3 Drawers  
Option: 1 Adjustable Shelf  
Note: Appliance specs required.



**TOV**

Tall Oven Cabinet with 4 Doors  
Option: 3 Adjustable Shelves  
Note: Appliance specs required.



**TDOV-1D**

Tall Double Oven Cabinet with 2 Doors, 1 Drawer  
Option: 1 Adjustable Shelf  
Note: Appliance specs required.



**TP-3D(L/R)**

Tall Pantry Cabinet with 1 Door, 3 Drawers  
Option: 4 Adjustable Shelves

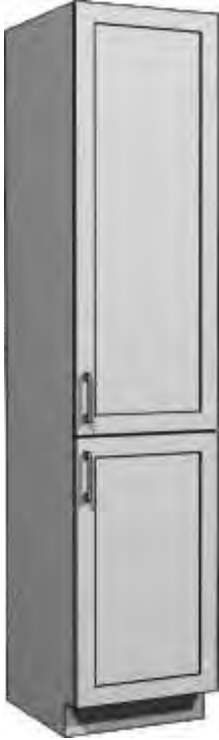


# AOS Elite CABINETS

## Frameless Cabinet Boxes - Tall Cabinets

**TP(L/R)**

Tall Pantry Cabinet with 2 Doors  
Option: 5 Adjustable Shelves



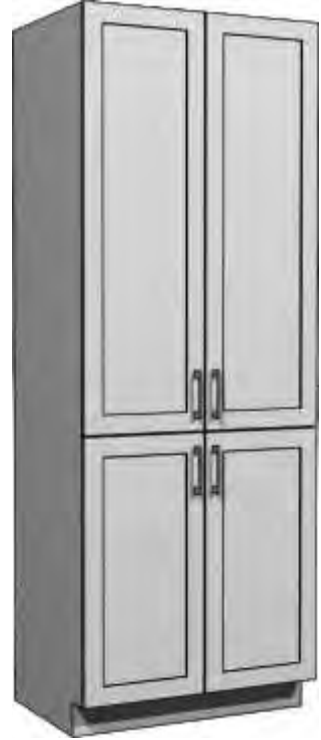
**TP-3D**

Tall Pantry Cabinet with 2 Doors, 3 Drawers  
Option: 4 Adjustable Shelves



**TP**

Tall Pantry Cabinet with 4 Doors  
Option: 5 Adjustable Shelf



**PCA**

Plain Column Angled 3" Wide



**FCA(L/R)**

Fluted Column Angled 3" Wide



**PC**

Plain Column Straight 3" Wide



**FA**

Fluted Column Straight 3" Wide



# Face Frame Cabinet Boxes

## Specifications

- Customizable width height, and depth to 1/16" (1.5mm).
- Assembled using patented wood on wood locking joint. Joint groove should be glued prior to sliding parts into place. Pin nailing is required when parts are in place.
- Choose either prefinished maple UV interior or unfinished interior to match wood species of the face frame.
- Side, top and back panels are 1/2" PureBond® plywood.
- Cabinet box plywood is light-colored domestic hardwood unless otherwise specified.
- Back panel is flush with the side panels.
- Shelves are 3/4" thick plywood, full depth, and adjustable.
- Shelves are sized 1/8" less than the total inside width for easy adjustment.
- Cabinets with shelves have the side panels bored for 5mm shelf pins on 1 1/4" (32mm) centers (pins included).
- Face frames are available in the following wood species: Alder, Cherry, Hickory, Hard Maple, Red Oak, Poplar, Walnut, White Oak and Soft Maple.
- Face frames are wide belt sanded to 220 grit (palm sanding recommended before finishing).
- All stiles, middle and bottom rails are 1 1/2" wide, 3/4" thick solid wood.
- All Wall and Tall cabinets have 2 1/4" wide, 3/4" thick solid wood top rails.
- 1/4" outside scribe included on all frames.
- Toe kick is 4" high and inset by 3".

## Blind Cabinet Calculations

- Blind Wall Cabinet width is calculated by the following formula:  
 $14 \frac{3}{4}'' + \text{the cabinet opening width} = \text{total cabinet width}$
- Blind Base Cabinet width is calculated by the following formula:  
 $27 \frac{1}{2}'' + \text{the cabinet opening width} = \text{total cabinet width}$

## Hardware

### Door Hinges & Shelf Pins

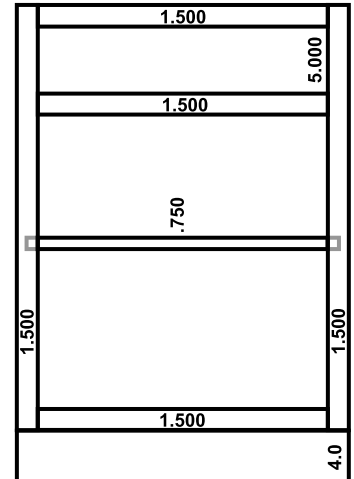
- 1/2" or 1 1/4" overlay soft close hinges. (No hinges available for inset application.)
- Shelf pin has clear acrylic support end with metal pin.

### Dovetail Drawer Box Runner Systems

- Blumotion concealed drawer runners offer four-dimensional front adjustment, elongated holes for depth adjustment, bottom mount holes and exceptional load capacity.
- Blumotion technology ensures silent and effortless closing action.
- Load Capacities: 66 lb (30 kg) load capacity.
- Adjustment: Tool-free height adjustment on all locking devices.

## Custom Stile and Rail Options

Options can be applied to base and wall cabinets as detailed below. Charges will be added to the individual cabinet boxes. Specify option on order form.

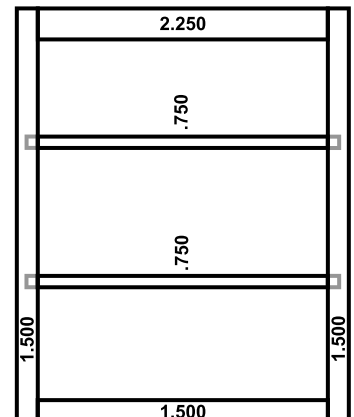


### Base Cabinet:

- 1.5" All Rails and Stiles
- 5" Top Drawer Opening
- 4" Toe Height
- 3" Toe Depth

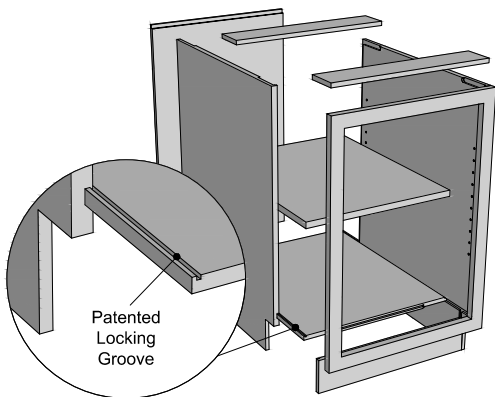
### Tall Cabinet:

- 2.25" Top Rails
- 1.5" Stiles, Mid & Bottom Rails



### Upper Cabinet:

- 2.25 Top Rail
- 1.5" Stiles & Bottom Rail
- 0.25" Outside Scribe
- 1.69" Top Scribe
- 0.935" Bottom Scribe



WALL	BASE	TALL	OPTION
NA	■	■	<b>A</b> Left Stile extended down 4" to floor
NA	■	■	<b>B</b> Right Stile extended down 4" to floor
■	■	■	<b>C</b> 5.5" Bottom Rail, no toe kick
■	■	■	<b>D</b> 3" Left Stile (2.25" scribe)
■	■	■	<b>E</b> 3" Right Stile (2.25" scribe)
■	■	■	<b>F</b> 3/4" Scribe Left Stile
■	■	■	<b>G</b> 3/4" Scribe Right Stile

# Face Frame Base Cabinets

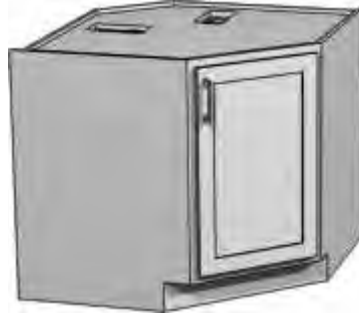
**BC**

Base Cabinet  
Option: 2 Adjustable Shelves



**BCANG**

Base Cabinet with Equal Angled Sides  
Option: 1 adjustable shelf



**Note:** Shelf must be installed  
BEFORE the cabinet top.

**BCANGD1**

Base Cabinet with Equal Angled Sides, 1 Drawer  
Option: 1 adjustable shelf



**Note:** Shelf must be installed  
BEFORE the cabinet top.

**BCBLCL**

Base Cabinet with Left Blind Corner  
Option: 1 adjustable shelf



**BCBLCLD1**

Base Cabinet with Left Blind Corner, 1 Drawer  
Option: 1 adjustable shelf



**BCBLCR**

Base Cabinet with Right Blind Corner  
Option: 1 adjustable shelf



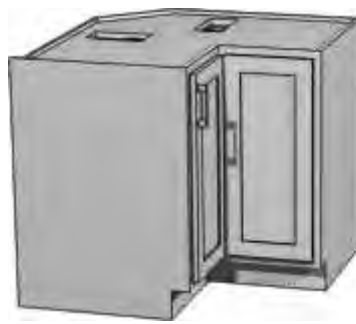
**BCBLCRD1**

Base Cabinet Blind Corner Right with 1 Drawer  
Option: 1 adjustable shelf



**BCCOR**

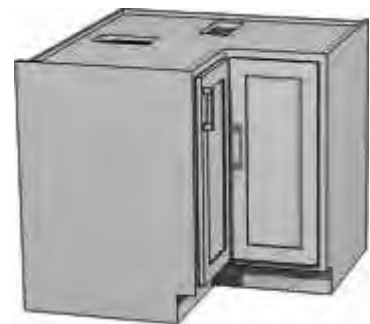
Base Corner Cabinet  
Option: 1 adjustable shelf



**Note:** Shelf must be installed  
BEFORE the cabinet top.

**BCCORFDP**

Base Corner Cabinet Full Depth  
Option: 1 adjustable shelf



**Note:** Shelf must be installed  
BEFORE the cabinet top.

**AOS Elite CABINETS**  
**Base Cabinets - Face Frame Cabinet Boxes**

**BCD1**  
Base Cabinet with 1 Drawer  
Option: 1 adjustable shelf



**BCD1FS1**  
Base Cabinet with 1 Fixed Self  
Option: 1 adjustable shelf



**BCD2EO**  
Base Cab with 2 Equal Drawer Openings



**BCD3**  
Base Cabinet with 3 Drawers



**BCD4**  
Base Cabinet with 4 Drawers



**BCD4EO**  
Base Cab with 4 Equal Drawer Openings



**BCMICFO15**  
Base Microwave Cabinet with  
Fixed Opening 15 1/2"



**BCO1D2**  
Base Cabinet with 1 Opening, 2 Drawers  
Option: 1 adjustable shelf



**BCVCD2EO**  
Vanity Cabinet with 2 Equal Drawer Openings  
Option: 1 adjustable shelf



# AOS Elite CABINETS

---

## Face Frame Cabinet Boxes - Base Cabinets

---

**BCVCD2FO16**  
 Vanity Cabinet with Fixed 16"  
 False Front Opening, 2 Drawers



**BCVCD2FO20**  
 Vanity Cabinet with Fixed 20"  
 False Front Opening, 2 Drawers



**BCVCD5FO12**  
 Vanity Cabinet with Fixed 12"  
 3 Center Drawer Stack



**BCVCD5FO18**  
 Vanity Cabinet with Fixed 18"  
 3 Center Drawer Stack



**BCVCD6FO21**  
 Vanity Cabinet with Left & Right 21" Fixed  
 Door Openings, 4 Center Drawer Stack



**BCVCD6FO27**  
 Vanity Cabinet with Fixed 27" Left & Right,  
 Door Opening, 4 Center Drawer Stack



**BCVCD6FO33**  
 Vanity Cabinet with Fixed Left & Right 33"  
 Door Openings, 4 Center Drawer Stack



**BCVCD9FO18**  
 Vanity Cabinet with Fixed 18"  
 Door Opening, 8 Drawers



**BCVCD9FO24**  
 Vanity Cabinet with Fixed 24"  
 Door Opening, 8 Drawers



**BCVCDL2**  
 Vanity Cabinet with 2 Left Drawers



**BCVCDR2**  
 Vanity Cabinet with 2 Right Drawers



**DS**  
 Desk Spacer



**SHELF**  
 Custom Sized Shelf 3/4" Plywood



## Face Frame Upper Cabinets

**UC**  
 Upper Cabinet



**UCMICRFO15**  
 Wall Over The Range Microwave Cabinet  
 with Fixed 15" High Bottom Opening



**UCDBLFO12**  
 Double Upper Cabinet with  
 Fixed 12" High Top Door Openings



**UCANG**  
 Upper Cabinet with Equal Angled Sides



**UCBLCL**  
 Upper Cabinet with Blind Left Corner



**UCBLCR**  
 Upper Cabinet with Blind Right Corner



# AOS Elite CABINETS

## Face Frame Cabinet Boxes - Upper / Tall Cabinets

**UCCOR**  
Upper Corner Cabinet



**UCMICF016**  
Wall Microwave Cabinet with  
Fixed 16 1/4" High Bottom Opening  
Note: Appliance specs required.



**UCMICF019**  
Wall Microwave Cabinet with  
Fixed 19 1/4" High Bottom Opening  
Note: Appliance specs required.

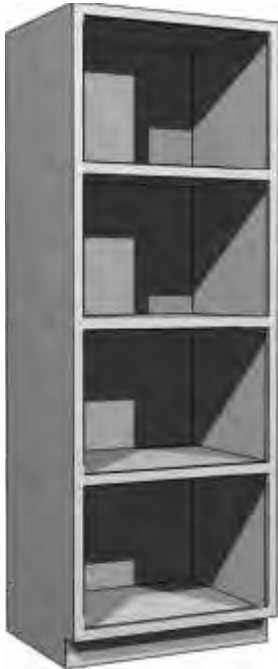


**UCMICF022**  
Wall Microwave Cabinet with  
Fixed 22 1/4" High Bottom Opening  
Note: Appliance specs required.



## Face Frame Tall Cabinets

**TOV**  
Tall Oven  
Note: Appliance specs required.



**TREF70**  
Tall 70" Refrigerator Cabinet  
Option: 1 adjustable shelf on upper  
cabinet taller than 15".



**TREF71**  
Tall 71" Refrigerator Cabinet  
Option: 1 adjustable shelf on upper  
cabinet taller than 15".



**TREF72**  
Tall 72" Refrigerator Cabinet  
Option: 1 adjustable shelf on upper  
cabinet taller than 15".



**Note:** This cabinet comes with all the necessary parts to custom fit a variety of built in appliances like ovens and warming drawers or even microwaves. It is shipped with three rails and shelves that can be installed in any configuration that you need with line boring for easy shelf installation.



---

# AOS Elite CABINETS

## Tall Cabinets - Face Frame Cabinet Boxes

---

### T485

Tall Cabinet with Fixed  
Lower 48.5" Height  
Option: 5 Adjustable Shelves



### T56

Tall Cabinet with Fixed  
Lower 56" Height  
Option: 5 Adjustable Shelves



### T64

Tall Cabinet Fixed  
Lower 64" Height  
Option: 5 Adjustable Shelves



### TEQ

Tall Cabinet with 2 Equal Openings  
Option: 4 Adjustable Shelves



